

Was haben Platform Engineering und Eishockey gemeinsam?

Puzzle Up! 24

Daniel Binggeli & Adrian Brunner



Nice to meet you



Daniel Binggeli
CTO

binggeli@puzzle.ch



Adrian Brunner
Co-Lead /cicd & /container

brunner@puzzle.ch

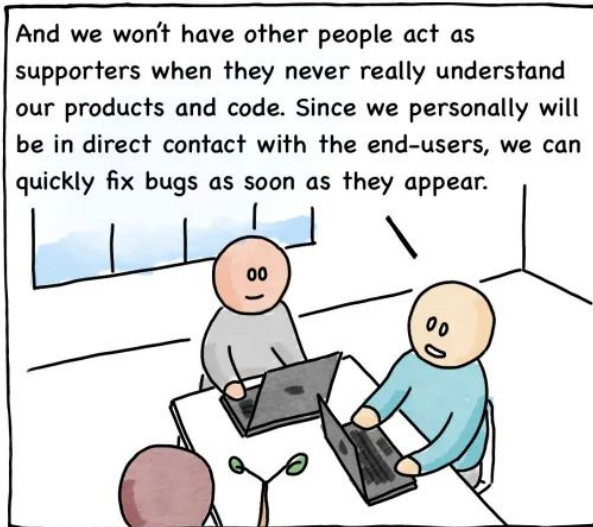
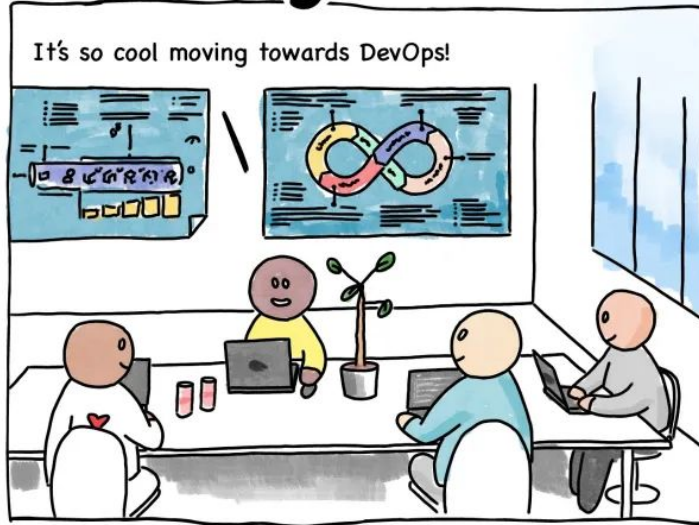
See the whole Puzzle team:
<https://www.puzzle.ch/de/team>



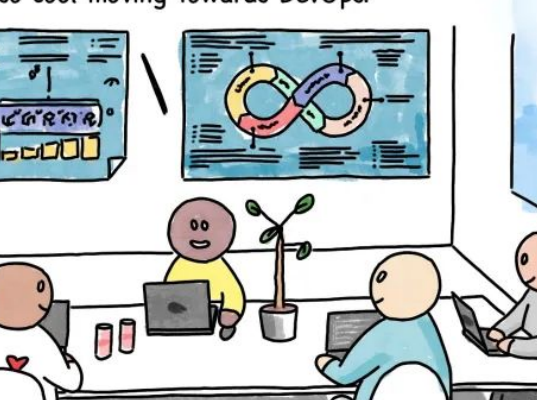
Platform Engineering & Eishockey

Was ist Platform Engineering?

Comic Agilé




It's so cool moving towards DevOps!



Yeah, it's great that we've finally established a CI/CD pipeline and automated all our testing, so we can now really take team ownership of our products.

A cartoon illustration of three people in an office setting. One person is standing and speaking, while two others are seated at desks with laptops. A small potted plant sits on the desk.

And we won't have other people act as supporters when they never really understand our products and code. Since we personally will be in direct contact with the end-users, we can quickly fix bugs as soon as they appear.

A cartoon illustration of two people sitting at a table with laptops, talking. A third person is partially visible in the foreground. The person on the left is wearing a grey shirt and the person on the right is wearing a blue shirt. They are both looking at their laptops. The background shows a window with blue panes and a small plant on the table.

Ring

Ring

Ring

Ring

Ring

I hate DevOps!



I Am Devloper
@iamdevloper

"full-stack" now means you can:

build front-ends

write back-ends

handle devops

start a podcast

curate a newsletter

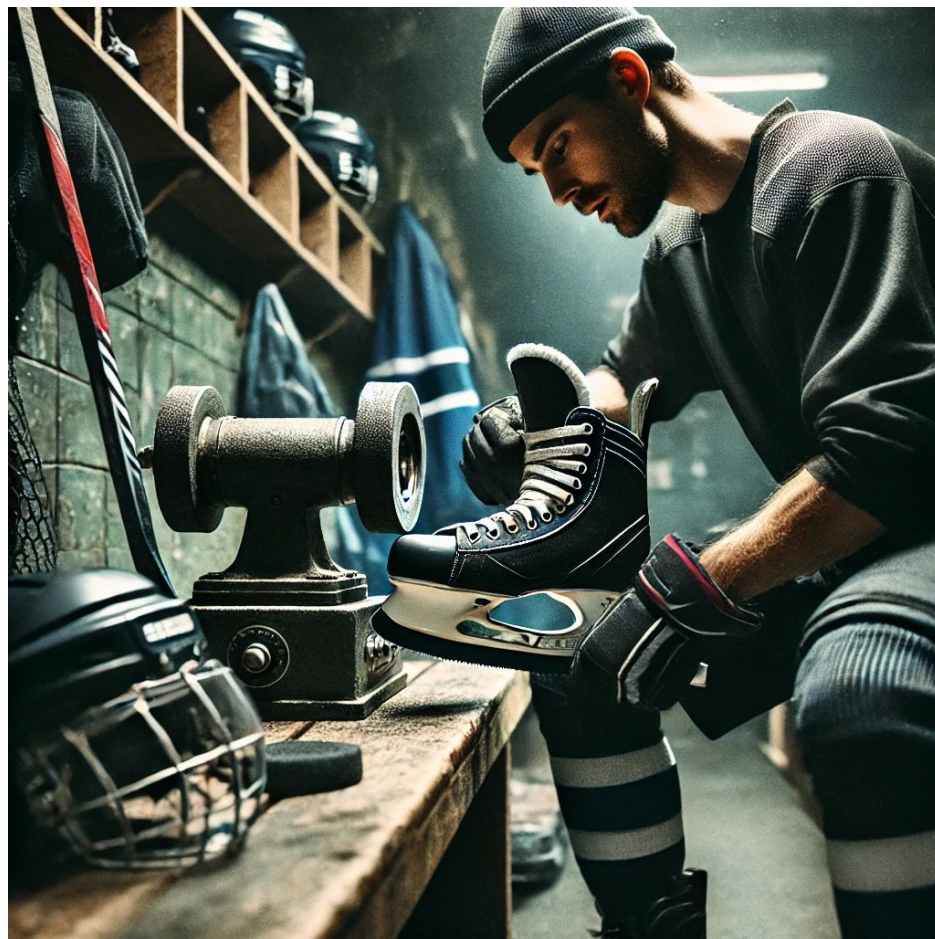
crack an egg with one hand

animate a Pixar movie

dunk

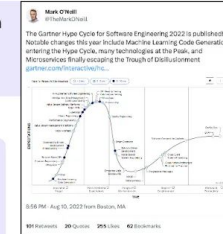
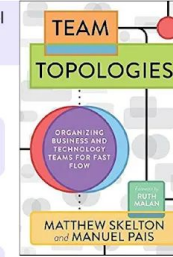
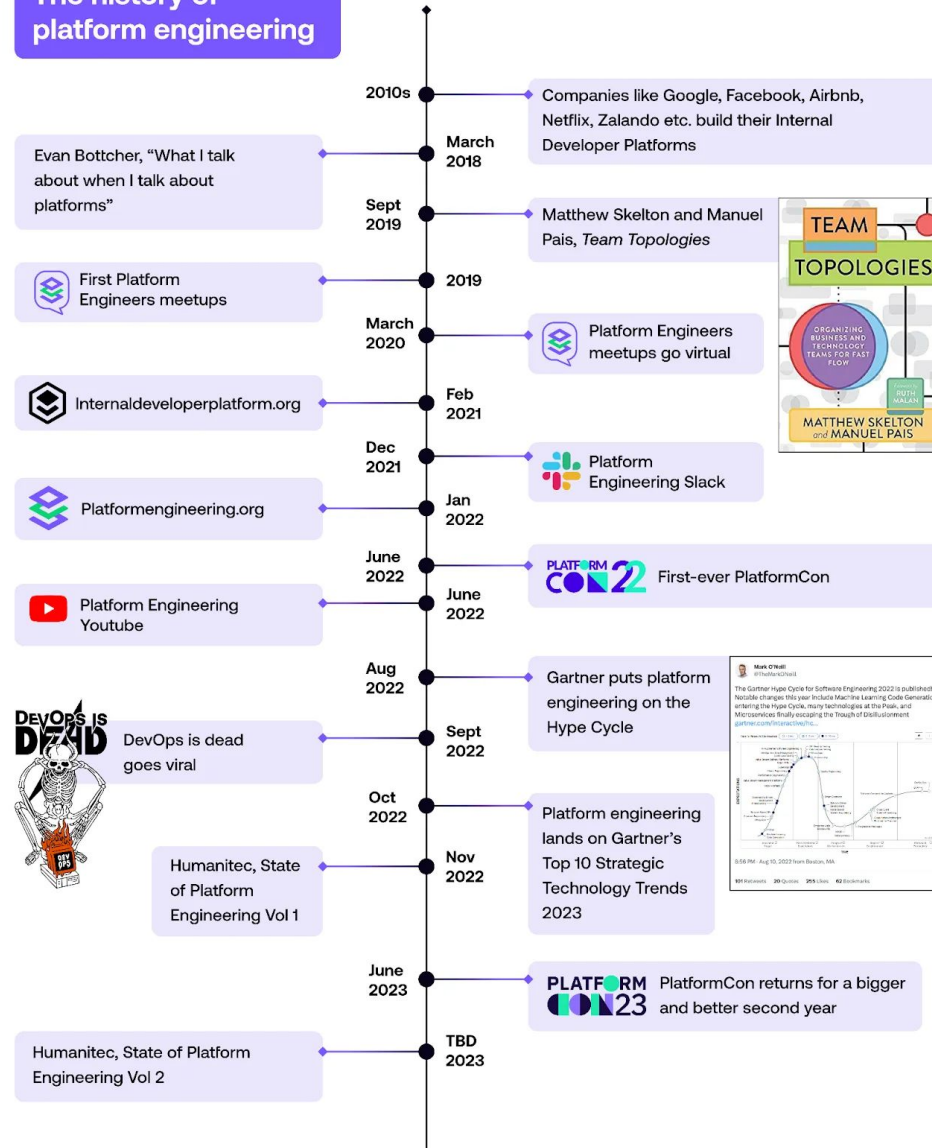
10:53 · 05/06/2019 · [Twitter Web App](#)

4 152 Retweets **14,8K** Likes





The history of platform engineering



Platform Engineering & Eishockey

CNCF Platform Engineering Maturity Model



Platform Engineering Maturity Model

	Provisional	Operational	Scalable	Optimizing
Investment	Wie werden Personal und Investitionen zugewiesen, um die Plattformfähigkeiten aufzubauen?			
Adoption	Wieso und wie finden und nutzen Nutzer:innen die Plattform und Plattformfähigkeiten?			
Interface	Wie interagieren und konsumieren Nutzer:innen die Plattformfähigkeiten?			
Operations	Wie wird die Plattform und deren Fähigkeiten geplant, priorisiert, entwickelt & erhalten?			
Measurement	Wie sieht der Prozess zur Sammlung und Integration von Feedback und Erkenntnissen aus?			

Platform Engineering Maturity Model

Provisional

Operational

Scalable

Optimizing

Investment

Wie werden Personal und Investitionen zugewiesen, um die Plattformfähigkeiten aufzubauen?

Freiwillig & temporär

Dediziertes Team

As a Product

Ökosystem



Platform Engineering Maturity Model

Provisional

Operational

Scalable

Optimizing

Adoption

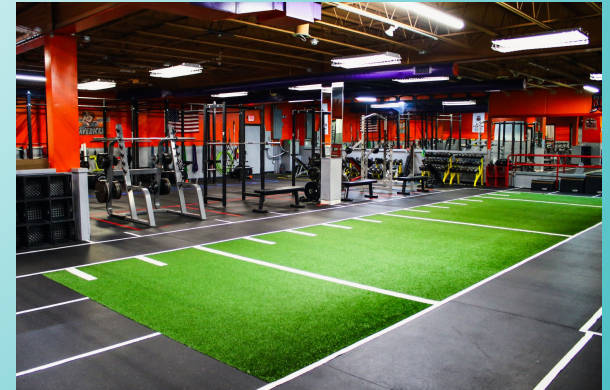
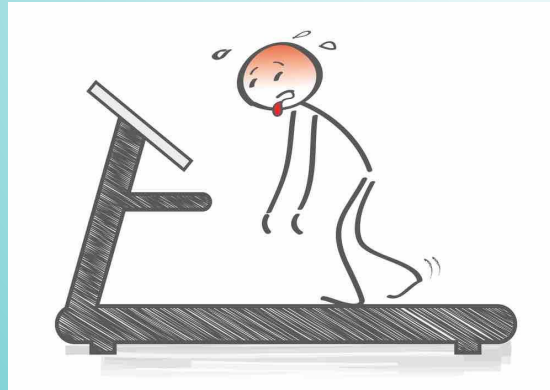
Wieso und wie finden und nutzen Nutzer:innen die Plattform und Plattformfähigkeiten?

Erratisch

Externer Push

Intrinsischer Pull

Partizipativ



Platform Engineering Maturity Model

Provisional

Operational

Scalable

Optimizing

Interface

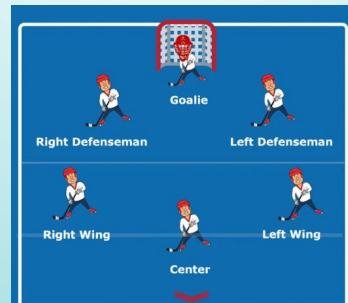
Wie interagieren und konsumieren Nutzer:innen die Plattformfähigkeiten?

Individuelle
Prozesse

Standardisierte
Tools

Self-Service

Integrierte Services



Platform Engineering Maturity Model

Provisional

Operational

Scalable

Optimizing

Operations

Wie wird die Plattform und deren Fähigkeiten geplant, priorisiert, entwickelt & erhalten?

Auf Anfrage

Zentral verwaltet

Zentral
unterstützend

Managed Services



Platform Engineering Maturity Model

Provisional

Operational

Scalable

Optimizing

Measurement

Wie sieht der Prozess zur Sammlung und Integration von Feedback und Erkenntnissen aus?

Ad hoc

Systematische
Sammeln

Umfassende
Erkenntnisse

Ganzheitliche
Analyse



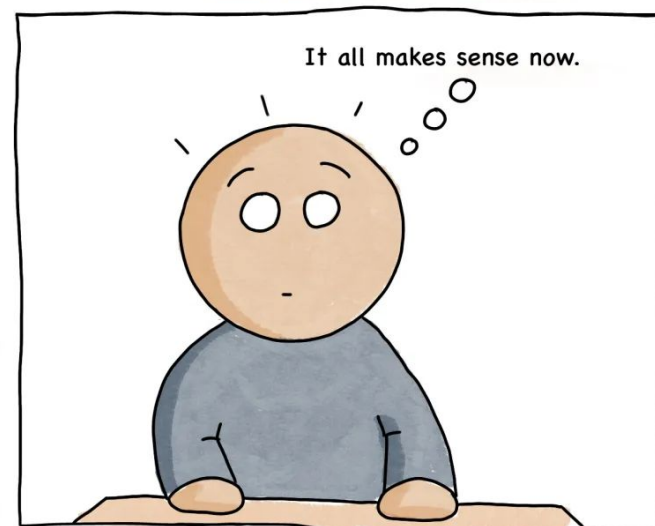
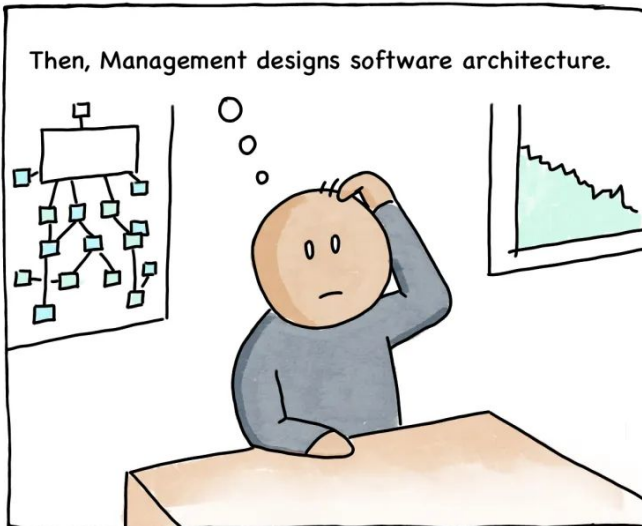
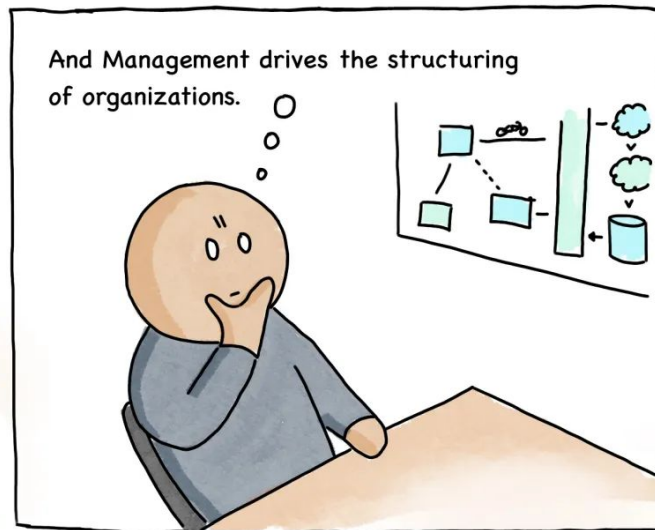
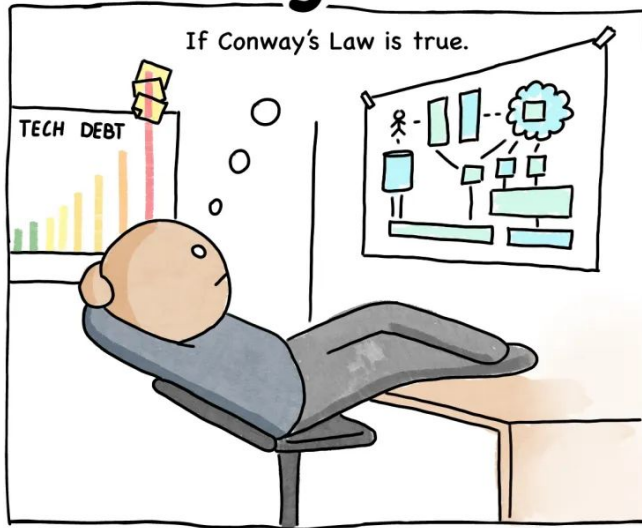
Platform Engineering Maturity Model

	Provisional	Operational	Scalable	Optimizing
Investment	Freiwillig & temporär	Dediziertes Team	As a Product	Ökosystem
Adoption	Erratisch	Externer Push	Intrinsischer Pull	Partizipativ
Interface	Individuelle Prozesse	Standardisierte Tools	Self-Service	Integrierte Services
Operations	Auf Anfrage	Zentral verwaltet	Zentral unterstützend	Managed Services
Measurement	Ad hoc	Systematische Sammeln	Umfassende Erkenntnisse	Ganzheitliche Analyse

Team Topologies und ihre Bedeutung

Organisation ist der Schlüssel
zum Erfolg!

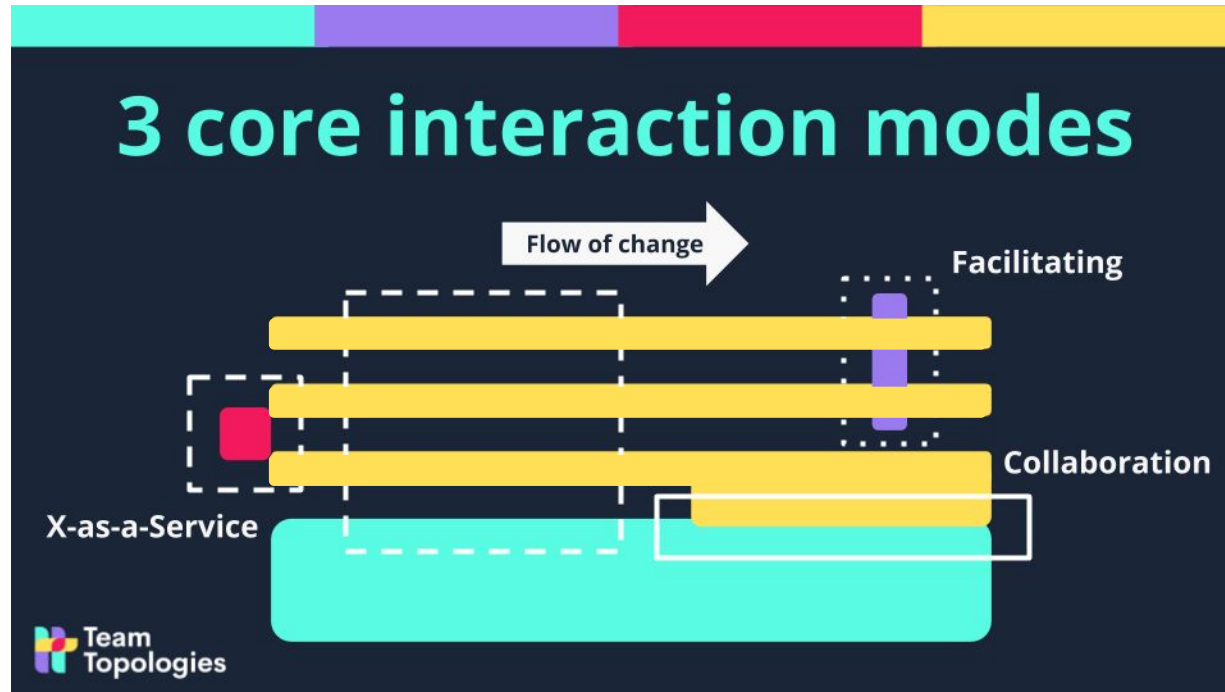
Comic Agilé



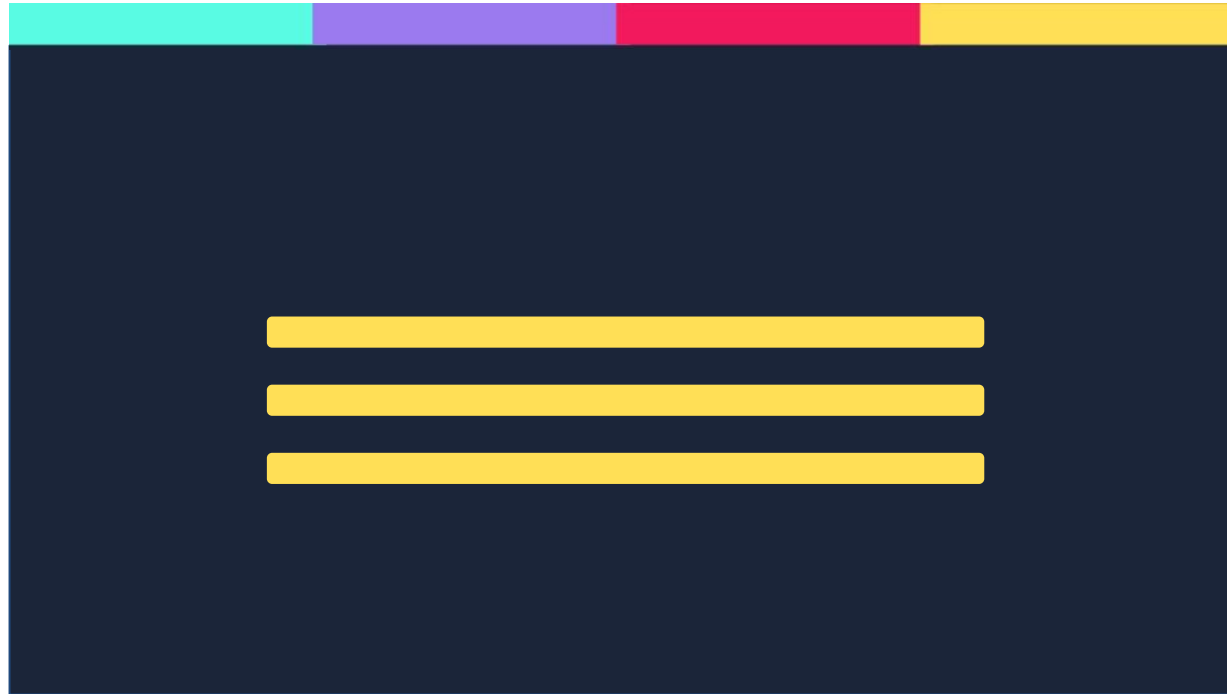
4 Typen von Teams nach Team Topologies



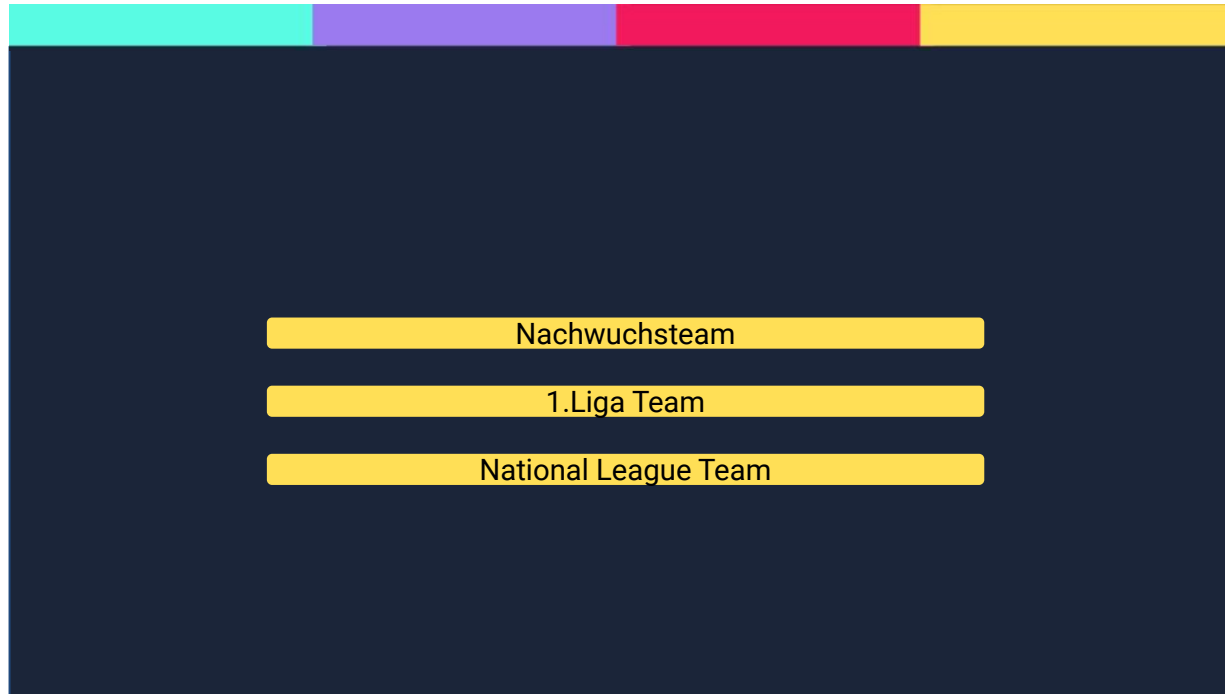
Interaktion von Teams nach Team Topologies



Beispiel Hockeyclub



Beispiel Hockeyclub



Beispiel Hockeyclub



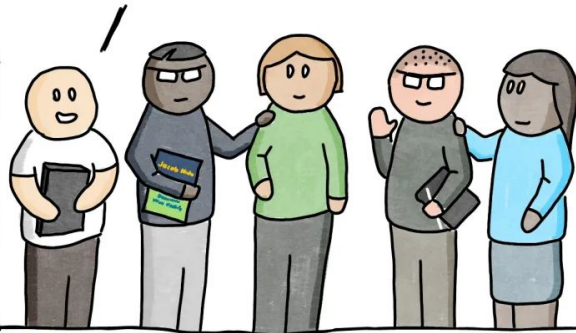


Comic Agilé

Team Topologies

The Stream-Aligned Team

We're so cross-functional and generalized that we're not really good at anything.



The Enabling Team

We're supposed to teach our competencies to the other teams, but we just do the work ourselves. It's much faster.



The Complicated Subsystem Team

People think that our system requires very advanced competencies, but we just don't want to share our knowledge.



The Platform Team

Without us, the stream-aligned teams couldn't deliver any value. Also, we hate talking to end-users. And all other people.



Business Lunch: Platform Engineering

Datum

27.11.2024

Zeit

11.00 - 13.00 Uhr



Thank you!

Find out more at:

<http://www.puzzle.ch>



@puzzleitc



@puzzleitc



@puzzleitc



@puzzle_itc



@puzzle